

STILL AT SCHOOL AND WANT TO GET A HEAD START IN THE BEAUTY, MAKE-UP OR HAIRDRESSING INDUSTRY?

WA Academy has Certificate II & III qualifications available through a school-friendly Vocational Education & Training (VET) program.

WHAT ARE VETDSS COURSES?

VETDSS stands for Vocational Education and Training delivered to Secondary Students.

Vocational Education and Training (VET) is a learning pathway available to Year 11 & 12 Senior Secondary School students as part of their West Australian Certificate of Education (WACE). VETDSS provides students with the opportunity to engage in education and training which may lead to employment and/or further study. These programs are undertaken whilst the student is completing their secondary education.

WA Academy is proud to have a variety of qualifications for students to participate in that leads to providing students with a nationally recognised qualification that deliver the skills and knowledge required for specific industries and occupations.

 waacademyperth  waacademy

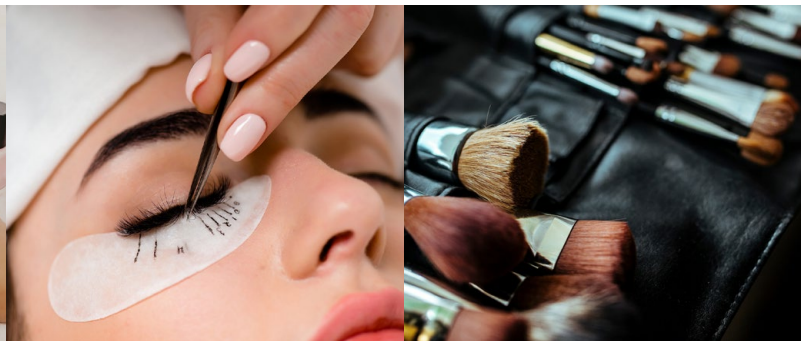
WHY CHOOSE A VETDSS COURSE?

- Gain a nationally recognised and accredited qualification
- Practical hands-on experience
- Kick-start your career
- Develop employability and industry- specific skills
- Develop and improve interpersonal skills
- Gain an insight into working in these industries
- Allows students to explore potential career pathways
- Allows students to explore potential career pathways before leaving school by attending one day per week

VETDSS PROGRAMS AVAILABLE AT WA ACADEMY

WA Academy can assist students in gaining one or more Certificate II or III qualifications to count towards WACE points. Qualifications available include:

- SHB20216 Certificate II in Salon Assistant - Hairdressing
- SHB30121 Certificate III in Beauty Services
- SHB30221 Certificate III in Make-up
- SHB30321 Certificate III in Nail Technology





ENTRY REQUIREMENTS

VET courses are available to Secondary School students. To be eligible you must:

1. Be 15 years of age or older and completing Year 11 or 12.
2. Have a Unique Student Identifier (USI) - to obtain this you will need to visit: <https://www.usi.gov.au>

Language, Literacy and Numeracy (LLN) Assessment: As a requirement of the student entry procedure, students may have to undertake a Language Literacy and Numeracy (LLN) assessment. This is assessed on a case-by-case scenario.

ATTENDANCE & COURSE START DATES

Courses are delivered one or two days per week on school weekdays.

1 year or 2 year programs available.

Please contact WA Academy on info@waacademy.com or 08 9356 2269 for the current course timetables

COURSE FEES & PAYMENT OPTIONS

Please refer to the specific course brochure for relevant fees and charges, along with payment options.

Please note that these courses are not government funded.

STUDENT REQUIREMENTS

- WA Academy uniform to be worn with black professional pants and black enclosed shoes.
- General stationery and a padlock for use of the lockers.
- Students are required to supply models for all practical assessments to demonstrate their technical skills.
- The Training Package stipulates that all practical assessments must be performed on a variety of models.
- Models are also required to pay the model assessment fee charge as assessments must be performed on a paying client.

Please refer to the course brochure of the qualification the student is enrolling into for specific requirements.

HOW TO APPLY

1. You must first speak to your School VET Coordinator or School Practitioner about enrolling into a VET course and receive approval before proceeding with an enrolment application.
2. Then view the Course Brochure and read through the course information and enrolment Terms and Conditions outlined on the Enrolment Form.
3. Next complete an Enrolment Form either online via our website or completing an electronic Enrolment Form; please note that a parent/legal guardian must co-sign the form.
4. Finally, a deposit payment must be submitted upon enrolment to secure a place in the program.

Contact us today or visit our website to learn more about WA Academy. Our classes are small, our lecturers are caring and experts in their field!

For enquiries and enrolments - Phone: (08) 9356 2269 | Email: info@waacademy.com | Visit: waacademy.com

